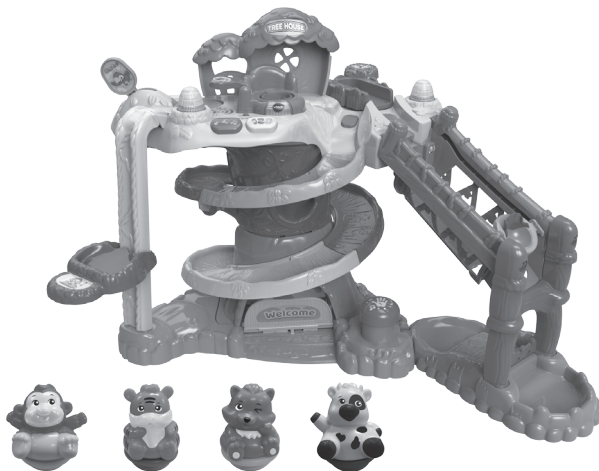


vtech®

# Parent's Guide

## ZoomiZooz®

### Tree House



91-003705-000 ©

VTech understands that a child's needs and abilities change as they grow and with that in mind we develop our toys to teach and entertain at just the right level...

### **vtech** Baby

Toys that will stimulate their interest in different textures, sounds and colours

#### I am...

...responding to colours, sounds and textures

...understanding cause and effect

...learning to touch, reach, grasp, sit-up, crawl and toddle

Birth-36 months



### **Pre-School**

Interactive toys to develop their imagination and encourage language development

#### I want...

...to get ready for school by starting to learn the alphabet and counting

...my learning to be as fun, easy and exciting as can be

...to show my creativity with drawing and music so my whole brain develops

3-6 years



### **Electronic Learning Computers**

Cool, aspirational and inspiring computers for curriculum related learning

#### I need...

...challenging activities that can keep pace with my growing mind

...intelligent technology that adapts to my level of learning

...National Curriculum based content to support what I'm learning at school

4-10 years



To learn more about this and other VTech® products, visit [www.vtech.co.uk](http://www.vtech.co.uk)

# INTRODUCTION

Thank you for purchasing the **VTech® ZoomiZooz® Tree House!**

Your child will love tumbling the ZoomiZooz® down the spiral tree trunk track and watching them roll and spin down the rope bridge, there's even a trap door so they can zoom in different directions! Place the 4 exclusive animal characters on the Magic ZoomiZone to hear their names and characteristics!

ON/OFF/ Volume Control Switch

Magic ZoomiZone

Parrot Handle

Light Up Button

Turntable Launcher

Music & 123 Buttons

Slide Buttons

Ladder Lift

Spiral Tree Trunk Track



4 Exclusive ZoomiZooz®

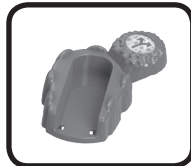
## INCLUDED IN THIS PACKAGE



One tree house platform



One roof



One turntable launcher



One tree trunk



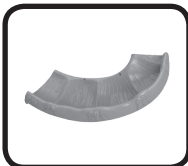
One tree base



Spiral track A



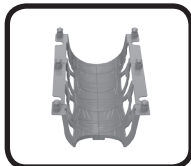
Spiral track B



Spiral track C



One rope bridge



One bridge side



One bridge support



One bridge base



One lift platform



One lift support



One label sheet



4 exclusive ZoomiZooz®; monkey, tiger, cat & cow

One Parent's Guide

**WARNING:**

All packing materials such as tape, plastic sheets, packaging locks, removable tags, cable ties and packaging screws are not part of this toy and should be discarded for your child's safety.

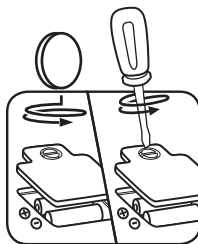
**NOTE:** Please keep this parent's guide as it contains important information.

**Note:** For your child's safety, do not aim at face or eyes when launching the ZoomiZooz® animals.

## GETTING STARTED

### BATTERY INSTALLATION

1. Make sure the unit is turned **OFF**.
2. Locate the battery cover on the back of the tree house platform. Use a coin or a screwdriver to loosen the screw.
3. Install 2 new AA (AM-3/LR6) batteries following the diagram inside the battery box. (The use of new alkaline batteries is recommended for maximum performance).
4. Replace the battery cover and tighten the screw to secure.



### BATTERY NOTICE

- Use new alkaline batteries or fully charged NI-MH (Nickel Metal-hydride) rechargeable batteries for best performance.
- Use only batteries of the same or equivalent type as recommended.
- Do not mix different types of batteries: alkaline, standard (carbon-zinc) or rechargeable (Ni-Cd, Ni-MH), or new and used batteries.
- Do not use damaged batteries.
- Insert batteries with the correct polarity.
- Do not short-circuit the battery terminals.
- Remove exhausted batteries from the toy.
- Remove batteries during long periods of non-use.
- Do not dispose of batteries in fire.
- Do not charge non-rechargeable batteries.
- Remove rechargeable batteries from the toy before charging (if removable).
- Rechargeable batteries are only to be charged under adult supervision.

## Disposal of batteries and product



The crossed-out wheellie bin symbols on products and batteries, or on their respective packaging, indicates they must not be disposed of in domestic waste as they contain substances that can be damaging to the environment and human health.



The chemical symbols Hg, Cd or Pb, where marked, indicate that the battery contains more than the specified value of mercury (Hg), cadmium (Cd) or lead (Pb) set out in Battery Directive (2006/66/EC).

The solid bar indicates that the product was placed on the market after 13th August, 2005.

Help protect the environment by disposing of your product or batteries responsibly.

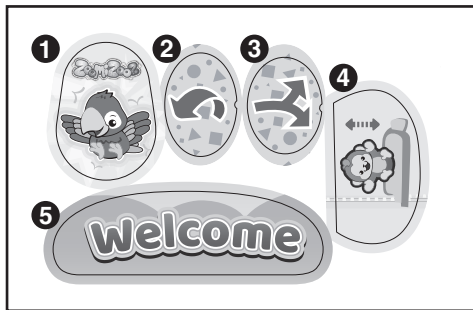
For more information, please visit:

[www.recycle-more.co.uk](http://www.recycle-more.co.uk)

[www.recyclenow.com](http://www.recyclenow.com)

## LABEL APPLICATION

Please stick the labels to the play set securely as indicated on the following pages:



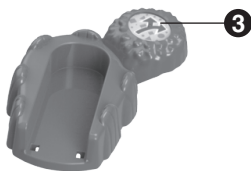


1

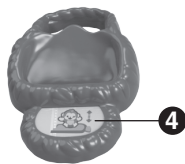
2



5



3



4



# ASSEMBLY INSTRUCTIONS

With the VTech® ZoomiZooz® Tree House, safety comes first. To ensure your child's safety, adult assembly is required.

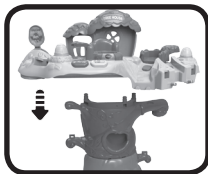
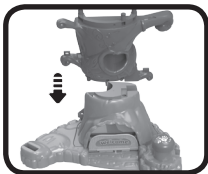
1. With the **Tree House Platform** right-side up, insert the **Roof** into the slots and attach the **Turntable Launcher** to the **Tree House Platform**, as shown below. You will hear a “click” sound to indicate the pieces are secure.

**Note: Once the Roof is attached, it cannot be removed.**



2. With the **Tree Base** right-side up, insert the **Tree Trunk** into the slots on the **Tree Base**. Then attach the **Tree House Platform** to the **Tree Trunk**, as shown below. You will hear a “click” sound to indicate the pieces are secure.

**Note: Once the Tree Trunk and Tree House Platform are attached, they cannot be removed.**



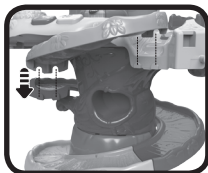
3. Assemble and attach the **Spiral Tracks** following the steps below:
- A. Attach **Spiral Track A** to the **Tree Base**, as shown below. You will hear a “click” sound to indicate the pieces are secure.



- B. Turn the tree house around, attach **Spiral Track B** to the **Tree Trunk**, as shown below. Once the pieces are attached, connect **Spiral Track A** to **Spiral Track B**, as shown below. You will hear a “click” sound to indicate the pieces are secure.

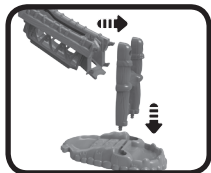


- C. Attach **Spiral Track C** to the **Tree House Platform** and **Spiral Track B**, as shown below. You will hear a “click” sound to indicate the pieces are secure.

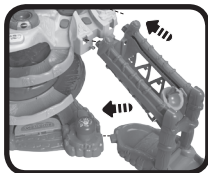


4. Assemble and attach the **Rope Bridge** components following the steps below:
- A. Insert the **Bridge Side** into the slots on the **Rope Bridge**. Then insert the **Rope Bridge** into the slots on the **Bridge Support**. After that, insert the **Bridge Support** into the slots on the **Bridge Base**, as shown below. You will hear a “click” sound to indicate the pieces are secure.

**Note: Once the Bridge Side is attached, it cannot be removed.**

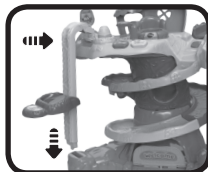
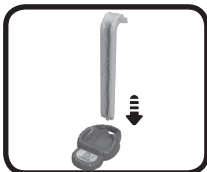


- B. Attach the **Rope Bridge** to the **Tree House Platform** and **Bridge Base** to the **Tree Base**, as shown below. You will hear a “click” sound to indicate the pieces are secure.

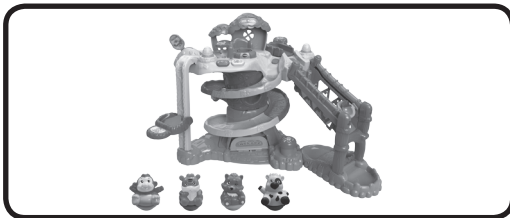


5. With the **Lift Platform** right-side up, insert the **Lift Support** through the hole of the **Lift Platform**. Then insert the **Lift Support** into the slots on the **Tree House Platform** and **Tree Base**, as shown below. You will hear a “click” sound to indicate the pieces are secure.

**Note:** Once the **Lift Support** is attached, it cannot be removed.



Once you've completed the above steps, you are ready to play!



## PRODUCT FEATURES

### 1. ON/OFF/Volume Control Switch

To turn the unit **ON**, slide the **ON/OFF/Volume Control Switch** to the Low Volume (🔊) or the High Volume (🔊) position. You will hear a song, a phrase and a sound effect. To turn the unit **OFF**, slide the **ON/OFF/Volume Control Switch** to the **OFF** (●) position.



## 2. AUTOMATIC SHUT-OFF

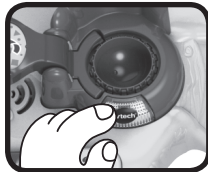
To preserve battery life, the **ZoomiZooz® Tree House** will automatically shut-off after approximately 50 seconds without input. The unit can be turned on again by pressing any button, pulling the handle or placing an animal on the **Magic ZoomiZone**.

## ACTIVITIES

1. Slide the **ON/OFF/Volume Control Switch** to turn the unit on. You will hear a sing-along song, fun phrase and a sound effect. The lights will flash with the sounds.



2. Press the **LIGHT UP BUTTON** to hear playful sing-along songs, fun phrases and sounds. If you answer questions with the ZoomiZooz® animal, you will hear playful phrases and sounds. The lights will flash with the sounds.



3. Put a ZoomiZooz® animal on the **Magic ZoomiZone** to hear fun phrases, sounds and short tunes. The lights will flash with the sounds.



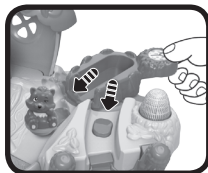
4. Press the **MUSIC BUTTON** to hear songs and melodies. While a melody is playing, put a ZoomiZooz® animal on the **Magic ZoomiZone** to add in fun sounds on the top of the melody. The lights will flash with the sounds.



5. Press the **123 BUTTON** to hear a song, fun phrases and sounds. The lights will flash with the sounds.



6. Slide a ZoomiZooz® animal through the **SLIDE BUTTONS** to hear fun phrases, sounds and short tunes. The lights will flash with the sounds.



7. Pull the **PARROT HANDLE** to see the ZoomiZooz® animal fall down the spiral track and hear fun phrases and sounds. The lights will flash with the sounds.



8. For added fun, the ZoomiZooz® interact with other ZoomiZooz® play sets (each ZoomiZooz® play set and additional ZoomiZooz® animals sold separately).



## SONG LYRICS

### SONG 1

We are the ZoomiZooz®

Welcome to our world!

We bounce and swing, roll and jump

It's so much fun!

It'll be an adventure

exploring all the way

Come along and join us ZoomiZooz®! (ZoomiZooz®!)

### SONG 2

1,2,3,4,5, ZoomiZooz® wobble and say Hi,


Counting as they roll along, they are having so much fun.




### SONG 3

Watch the ZoomiZooz® roll around the tree,

Up and down, spin and play.



## MELODY LIST

1. Yankee Doodle
  2. I've Been Working on the Railroad
  3. Hickory Dickory Dock
  4. Skip to my Lou
  5. Jack be Nimble
  6. Old MacDonald
  7. Polly Wolly Doodle
  8. Row, Row, Row Your Boat
  9. Are You Sleeping
  10. To Market, To Market
  11. Teddy Bear's Picnic
  12. She'll be Coming Round the Mountain
- 

13. Sing a Song of Sixpence
14. Roses are Red
15. Mexican Hat Dance

## CARE & MAINTENANCE

1. Keep the unit clean by wiping it with a slightly damp cloth.
2. Keep the unit out of direct sunlight and away from any direct heat source.
3. Remove the batteries when the unit will not be in use for an extended period of time.
4. Do not drop the unit on hard surfaces and do not expose the unit to moisture or water.

## TROUBLESHOOTING

If for some reason the unit stops working, please follow these steps:

1. Please turn the unit **OFF**.
2. Interrupt the power supply by removing the batteries.
3. Let the unit stand for a few minutes, then replace the batteries.
4. Turn the unit **ON**. The unit should now be ready to play again.
5. If the product still does not work, replace with an entire set of new batteries.

If the problem persists, please contact our Consumer Services Department and a service representative will be happy to help you.

CLASS 1  
LED PRODUCT



## CONSUMER SERVICES

Creating and developing **VTech**<sup>®</sup> products is accompanied by a responsibility that we at **VTech**<sup>®</sup> take very seriously. We make every effort to ensure the accuracy of the information, which forms the value of our products. However, errors sometimes can occur. It is important for you to know that we stand behind our products and encourage you to call our Consumer Services Department with any problems and/or suggestions that you might have. A service representative will be happy to help you.

UK Customers:

Phone: 0330 678 0149 (from UK) or +44 330 678 0149 (outside UK)

Website: [www.vtech.co.uk/support](http://www.vtech.co.uk/support)

Australian Customers:

Phone: 1800 862 155

Website: [support.vtech.com.au](http://support.vtech.com.au)

NZ Customers:

Phone: 0800 400 785

Website: [support.vtech.com.au](http://support.vtech.com.au)

## PRODUCT WARRANTY/ CONSUMER GUARANTEES

UK Customers:

Read our complete warranty policy online at [vtech.co.uk/warranty](http://vtech.co.uk/warranty).

Australian Customers:

**VTECH ELECTRONICS (AUSTRALIA) PTY LIMITED –  
CONSUMER GUARANTEES**

Under the Australian Consumer Law, a number of consumer guarantees apply to goods and services supplied by VTech Electronics (Australia) Pty Limited. Please refer to [vtech.com.au/consumerguarantees](http://vtech.com.au/consumerguarantees) for further information.



**Visit our website for more  
information about our products,  
downloads, resources and more.**

***www.vtech.co.uk***  
***www.vtech.com.au***



TM & © 2019 VTech Holdings Limited.  
All rights reserved.  
**Printed in China.**  
91-003705-000